



EXPERIENCE EQUIPPING POTENTIAL

The Vision

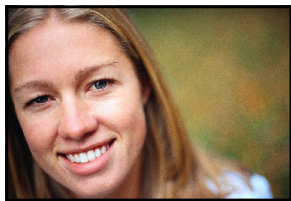
“For by the last words of David the Levites were numbered from *twenty years old and above*; because their duty was to help the sons of Aaron in the service of the house of the Lord, in the courts and in the chambers, in the purifying of all holy things and the work of the service of the house of God.”



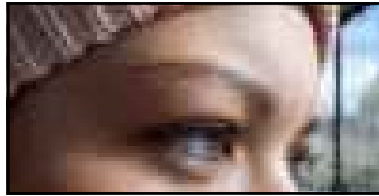
I Chronicles 23:27-28

Women’s Ministries leaders **identify** women 20 to 30 years of age who evidence a call to Christian service.

They **embrace & engage** their unique expression; **empower & equip** them in every aspect of leadership; and **release them to lead** within women’s ministries and the church at large.



S.U.R.G.E



The Definition

S.U.R.G.E...Serving to Utilize the Rising Generation Expression.

From Catalan *surgir to heave, cast anchor, from Latin surgere to rise, spring up; from sub-up+ regere to lead straight.* Webster Miriam Dictionary

S.U.R.G.E. Mentorship is relationship based and occurs within the regions and areas of women’s ministries. Each Regional Director and Area Leader appoints a S.U.R.G.E. Leader for their region and area.



It’s time for the one-on-one.

It’s time to empower this generation

to tell the world about **JESUS.**

What time is it?

The Reciprocation

S.U.R.G.E achieves far more than equipping young women for Christian leadership.

This generation

of

women leaders

is **the key**

to keeping

women’s ministries

relevant & alive.

21st century women’s ministries demands a change in the status quo. Embracing this generation’s expression and incorporating its vision into women’s ministries, secures the future of women in ministry and women’s ministries.



The Outcome

A Women’s Ministries S.U.R.G.E Leader is the bridge to the future and the connector to the younger generation.

This mentorship of women’s ministries disciples the daughters of tomorrow by making leaders of them today. **Interested? Contact**

michelleloperfido@yahoo.com

Women’s Ministries



S.U.R.G.E Leaders

POTENTIAL EQUIPPING EXPERIENCE

